

Renfrew County and District Health Unit

"Optimal Health for All in Renfrew County and District"

Health for all Schools E-Newsletter

For Educators in Renfrew County and District

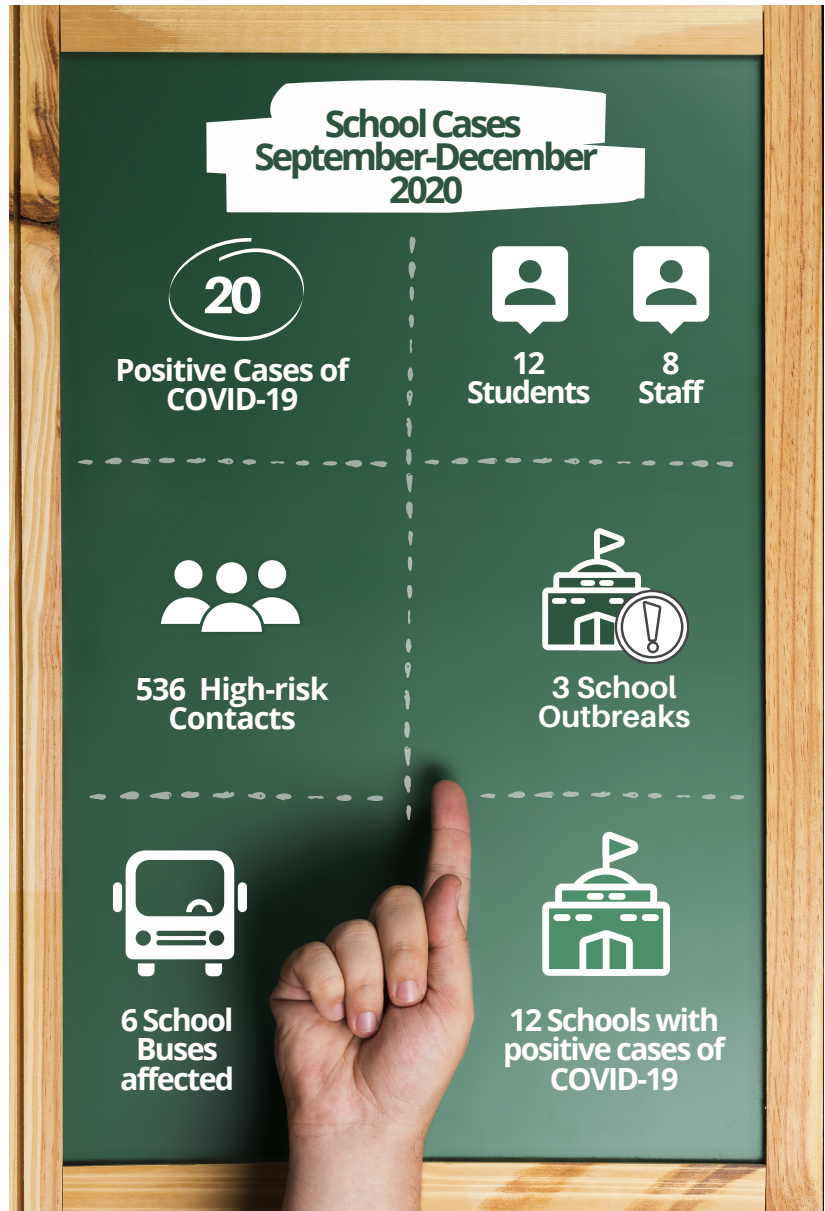
COVID-19 School Snapshot

Since the beginning of the 2020/2021 school year, Renfrew County and District Health Unit (RCDHU) has been working with our local schools to minimize transmission of COVID-19 and keep everyone safe. RCDHU would like to take this opportunity to commend the work of our local educators and all school staff, students and families for all your hard work in keeping our school communities safe. There has been minimal school transmission of COVID-19 so far. Keep up the great work!

The purpose of this document is to provide a snapshot of what has happened up to December 17th, 2020 in Renfrew County and District (RCD) schools.

Number of COVID-19 cases in Schools

Between September and December 2020, RCDHU has confirmed 20 laboratory-confirmed positive cases of COVID-19 in schools throughout the county, and has declared three school outbreaks.



Renfrew County and District Health Unit

"Optimal Health for All in Renfrew County and District"

www.rcdhu.com • 613-732-3629 • 1-800-267-1097

Dates of School Outbreaks

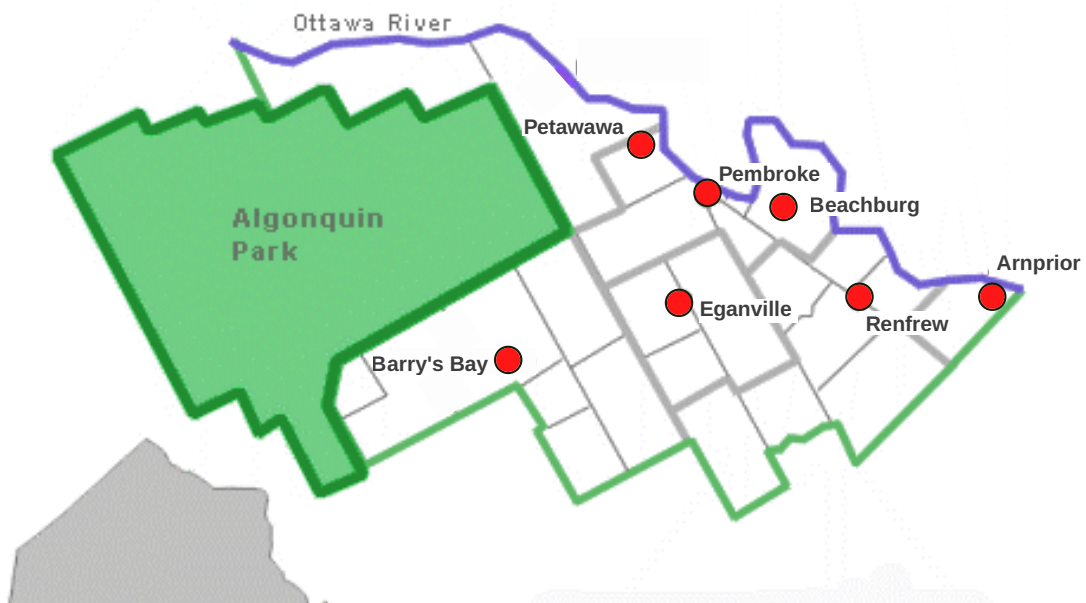


Symbol Legend

- Staff Case
- Staff Case
- ▲ Outbreak Declared
- ◆ Student Case where COVID-19 was most likely acquired **outside** school environment
- ◆ Student Case where COVID-19 was most likely acquired **within** school environment
- 👍 Outbreak End

Locations of Confirmed School Cases

- Valour K-12 School
- Fellowes High School
- Bishop Smith Catholic High School
- Opeongo High School
- Renfrew Collegiate Institute
- Madawaska Valley District High School
- Aj Charbonneau Public School
- Herman Street School
- Eganville and District Public School
- Our Lady of Grace Separate School
- Sherwood Public School
- St. Francis of Assisi Catholic School



Renfrew County and District Health Unit

"Optimal Health for All in Renfrew County and District"

www.rcdhu.com • 613-732-3629 • 1-800-267-1097

Preventative Measures

Under the guidance of public health, various preventative measures have been implemented in schools to combat the possible spread of COVID-19:

- Masking
 - Non-medical for students
 - Medical for staff
- Daily screening
- Contact tracing and timely self-isolation
- Physical distancing
- Hand hygiene
- Enhanced environmental cleaning
- Cohorting students and staff
- Minimal travel between schools



Conclusion

RCDHU would like to thank school boards, staff, students and parents for their continued commitment and dedication to adhering to public health measures.

It has not been easy, but everyone has adapted to the ongoing changes, and have done what has been asked of them in order to keep schools open for learning.

Thank you to all for the daily efforts that go into keeping schools open, clean, and ready for learning, and for the trust and commitment from parents and students.



Definitions

School Outbreak: two or more lab-confirmed COVID-19 cases in students, staff, or visitors in a school with an epidemiological link, within a 14-day period, where at least one case could have reasonably acquired their infection in the school (including transportation and before/after school care).

High Risk Contact: an individual with a high-risk exposure to a confirmed or probable case.

Transmission: the spreading of an infectious agent from one person to another.

Self-isolation: staying home and not going to work, school or other public places. It includes: avoiding contact with others, not using public transportation, no visitors, staying in separate rooms, keeping a two meter distance away from other household members, washing hands and commonly touched surfaces often, covering coughs and sneezes, and wearing a mask.

Renfrew County and District Health Unit

"Optimal Health for All in Renfrew County and District"

www.rcdhu.com • 613-732-3629 • 1-800-267-1097

Renfrew County Catholic District School Board

" Folks have really done everything that has been asked of them and made sacrifices to keep schools open. It's a real tribute to Renfrew County resilience, in my opinion. I know we have the advantage of low population density, but the effort has been great."

- Jaimie Perry, Director of Education

Renfrew County District School Board

" Much credit to the employees of all school boards. Not only for their day to day efforts to keep our schools, clean and open for learning, but for being optimistic and positive with our parents regarding their children's daily attendance in our schools."

- Brent McIntyre, Superintendent

Conseil des écoles catholiques du Centre-Est

"We are very proud of our staff as well as students who demonstrate perseverance in responding to this pandemic. With the support of our school board, the CECCE, as well as RCDHU we can keep our school open, clean and safe."

- Daniel Levasseur, Principal at Centre scolaire catholique Jeanne-Lajoie (secondary side)

Conseil des écoles publiques de l'Est de l'Ontario

"We are proud of the continuous efforts demonstrated by the school staff in all Renfrew County schools in collaboration with RCDHU. School staff rigorously apply protocols as well as public health measures and students are showing resiliency and have adapted well to the new reality. The whole school community and their partners can be proud of their achievements."

- Chantal Lafrance-Purdie, Vice Principal at Équinoxe

Renfrew County & District Health Unit

"A big thanks to all staff for keeping our schools up and running this past fall. In spite of a few expected challenges, overall it has been a big success. This is a tribute to your hard work. Thank you for observing important public health measures during your working hours and equally importantly when you are not at work."

- Dr. R. Cushman, Acting Medical Officer of Health

Promoting and protecting the health and well-being of school aged children and youth is a provincial public health priority. RCDHU is using the Foundations for a Healthy School approach, which includes: creating supportive social and physical environments; supporting teaching and curriculum implementation; engaging children and youth; building home, school and community partnerships; and, protecting the health of students. We look forward to collaborating with you.

Renfrew County and District Health Unit

"Optimal Health for All in Renfrew County and District"

www.rcdhu.com • 613-732-3629 • 1-800-267-1097